



**Indiana Rural Water Association**  
**and**  
**Indiana Section AWWA**  
*invite you to participate in our joint*  
**Operator Boot Camp**



This year's Operator Boot Camp will be held on September 4, 2008 (8:00am – 5:00pm) at the Apollo Club located in the Grissom Aeroplex in Peru, Indiana. We once again wish to provide a full day of primarily outdoor demonstrations and presentations. We are utilizing the same facility as we have in the past. The Apollo Club sits on six acres of ground with a number of utilities surrounding the site. We can dig holes, rehab manholes, rehab pipe, demonstrate equipment, etc. as long as we put everything back to "as good or better" condition at the end of the day.

We are offering our friends in the vendor community the opportunity to showcase products, processes, and services. Final determination on the flow of the show will be made once we have a good idea of those who wish to participate. We encourage partnering with other companies to present a complete picture – for example, process demos could be partnered with engineering firms, hydro-excavation could be partnered with directional drilling, safety items could be partnered with a number of other demos, restoration and hydro-seeding, etc. Our goal is to have as much hands-on and interaction as possible with the attendees.

Additionally, we are offering exhibit space for table top or small free-standing displays. ***Exhibitors are limited to 8' of exhibit space and will need to bring their own tables.***

The Associate Member Exhibits and Events Committee will select demonstrations and exhibit space based on practicality, applicability of topic(s) to attendees, usage of multiple vendors (for demos), completeness of the application and requested materials, payment submitted with application, deadlines met, etc.

In order to properly promote this event and to submit these activities for contact hour approval from IDEM (both water and wastewater hours) we ask that you submit the following information in addition to this completed application ***no later than July 23, 2008.***

- ✓ Bios on all speakers, presenters, and demonstrators
- ✓ Outline or abstract of information to be covered
- ✓ Certificate of Liability Insurance

We hope you will decide to participate in this event!! Our goal is to once again have a unique, interactive, fun day filled with lots of educational opportunities, networking, and camaraderie!!



**ARE YOU LOOKING FOR WAYS TO  
DEMONSTRATE YOUR PRODUCTS  
AND SERVICES?**

YES, we want to participate in the Operator Boot Camp!! We wish to: (*check all that apply*)

- Demonstrations** – EACH IRWA or AWWA Member \$175 – EACH Non-Member \$375, includes two staff registrations and two lunches per company. Additional staff registrations \$40 each.
- Exhibit or Equipment Display** –
  - We wish to only have an indoor 8' exhibit space – IRWA or AWWA Member \$175 – Non-Member \$375, includes two staff registrations and two lunches. Additional staff registrations \$40 each.
  - We wish to only have an outdoor equipment display – IRWA or AWWA Member \$175 – Non-Member \$375, includes two staff registrations and two lunches. Additional staff registrations \$40 each.  
Equipment to be displayed? \_\_\_\_\_  
Amount of space required? \_\_\_\_\_

---

**FOR DEMONSTRATIONS:**

Topic/Title: \_\_\_\_\_

Speaker: \_\_\_\_\_

Applicable to: \_\_\_\_\_ Water \_\_\_\_\_ Wastewater

Amount of time required for demo: \_\_\_\_\_ ½ hour \_\_\_\_\_ 1 hour \_\_\_\_\_ 1-1/2 hour

Amount of Space Required? \_\_\_\_\_

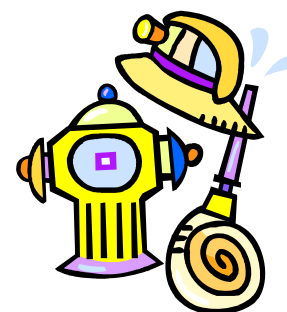
Other Requirements? \_\_\_\_\_

\_\_\_\_\_  
\_\_\_\_\_

Other Vendors Involved With Demonstration: \_\_\_\_\_

\_\_\_\_\_  
\_\_\_\_\_

**PLEASE NOTE:**  
All exhibits and  
equipment  
displays need to  
be set-up by  
7:00am.  
Demos need to be  
ready to go at  
8:00am



---

**Primary Vendor #1 (Demo, Exhibit, Equipment Display)**

Primary Registered Staff Person (included in fee): \_\_\_\_\_

Other Staff Registration (included in fee): \_\_\_\_\_

Additional Staff Registration (\$40 each): \_\_\_\_\_

Additional Staff Registration (\$40 each): \_\_\_\_\_

Company: \_\_\_\_\_

Address: \_\_\_\_\_

\_\_\_\_\_

Cell Phone: \_\_\_\_\_ Office Phone: \_\_\_\_\_ Fax: \_\_\_\_\_

E-Mail Address: \_\_\_\_\_

**Vendor #2 (participating in group demo)**

Primary Registered Staff Person (included in fee):

\_\_\_\_\_

Other Staff Registration (included in fee):

\_\_\_\_\_

Additional Staff Registration (\$40 each):

\_\_\_\_\_

Additional Staff Registration (\$40 each):

\_\_\_\_\_

Company:

\_\_\_\_\_

Address:

\_\_\_\_\_

Cell

Phone:

\_\_\_\_\_

Office Phone:

Fax:

\_\_\_\_\_

**Vendor #3 (participating in group demo)**

Primary Registered Staff Person (included in fee):

\_\_\_\_\_

Other Staff Registration (included in fee):

\_\_\_\_\_

Additional Staff Registration (\$40 each):

\_\_\_\_\_

Additional Staff Registration (\$40 each):

\_\_\_\_\_

Company:

\_\_\_\_\_

Address:

\_\_\_\_\_

Cell

Phone:

\_\_\_\_\_

Office Phone:

Fax:

\_\_\_\_\_

**PAYMENT DUE:**

**DEMONSTRATIONS**

Vendor #1 –

IRWA/AWWA Member (includes 2 staff registrations) **\$175**

Non IRWA/AWWA Member (includes 2 staff registrations) **\$375**

Extra staff registrations \_\_\_\_\_ **x \$40**

Vendor #2 –

IRWA/AWWA Member (includes 2 staff registrations) **\$175**

Non IRWA/AWWA Member (includes 2 staff registrations) **\$375**

Extra staff registrations \_\_\_\_\_ **x \$40**

Vendor #3 –

IRWA/AWWA Member (includes 2 staff registrations) **\$175**

Non IRWA/AWWA Member (includes 2 staff registrations) **\$375**

Extra staff registrations \_\_\_\_\_ **x \$40**

**EXHIBIT ONLY**

IRWA/AWWA Member (includes 2 staff registrations) **\$175**

Non IRWA/AWWA Member (includes 2 staff registrations) **\$375**

Extra staff registrations \_\_\_\_\_ **x \$40**

**EQUIPMENT DISPLAY**

IRWA/AWWA Member (includes 2 staff registrations) **\$175**

Non IRWA/AWWA Member (includes 2 staff registrations) **\$375**

Extra staff registrations \_\_\_\_\_ **x \$40**

\_\_\_\_\_ **Check Enclosed**

\_\_\_\_\_ **Credit Card**

**GRAND TOTAL \$** \_\_\_\_\_

Please make checks payable to:

Indiana Rural Water Assoc.

You may send all your registration information to Indiana Rural Water Association at:

Fax: 812-988-6961

**OR**

E-mail: [OdieIRWA@aol.com](mailto:OdieIRWA@aol.com)

**OR**

Regular Mail:

Indiana Rural Water Assoc.  
P. O. Box 679  
Nashville, IN 47448

**Questions???**

- Please call -

Odetta Cadwell  
317-402-7349

MaryJane Miller  
1-866-895-IRWA (4792).

CREDIT CARD: Visa \_\_\_\_\_ MC \_\_\_\_\_ Discover \_\_\_\_\_ Am Exp \_\_\_\_\_

# \_\_\_\_\_ Exp.: \_\_\_\_\_ - \_\_\_\_\_

NAME ON CARD \_\_\_\_\_

SIGNATURE \_\_\_\_\_





**Indiana Rural Water Association  
and  
Indiana Section AWWA  
invite you to participate in our joint  
Operator Boot Camp**



**INFORMATION:**

Attendee registration will begin at 7:00am on September 4, 2008. All exhibits and equipment displays need to be set-up by 7:00am. Demos need to be set-up and ready to go by 8:00am.

A meeting will be held at 7:00am in the Banquet Hall for all persons participating in demonstrations.

Refreshments and lunch will be provided.

All demonstrations will have stewards present to monitor attendees.

All demonstrating companies must provide to Indiana Rural Water Association/Indiana Section AWWA a certificate of liability insurance.

Each utility attendee will receive a program of all vendors participating in the day, including contact information.

We have not blocked any hotel rooms for this event. Hotel accommodations are available in Peru and Kokomo.

If you are interested in golf either the day before or the day after the Operator Boot Camp, there are courses in the area.



**Indiana Rural Water Association  
PO Box 679  
Nashville, IN 47448**

First Class  
US Postage  
**PAID**  
Printing Partners

**Return Service Requested**



**Indiana Section AWWA**

**IRWA & AWWA  
OPERATOR BOOT CAMP  
September 4, 2008**